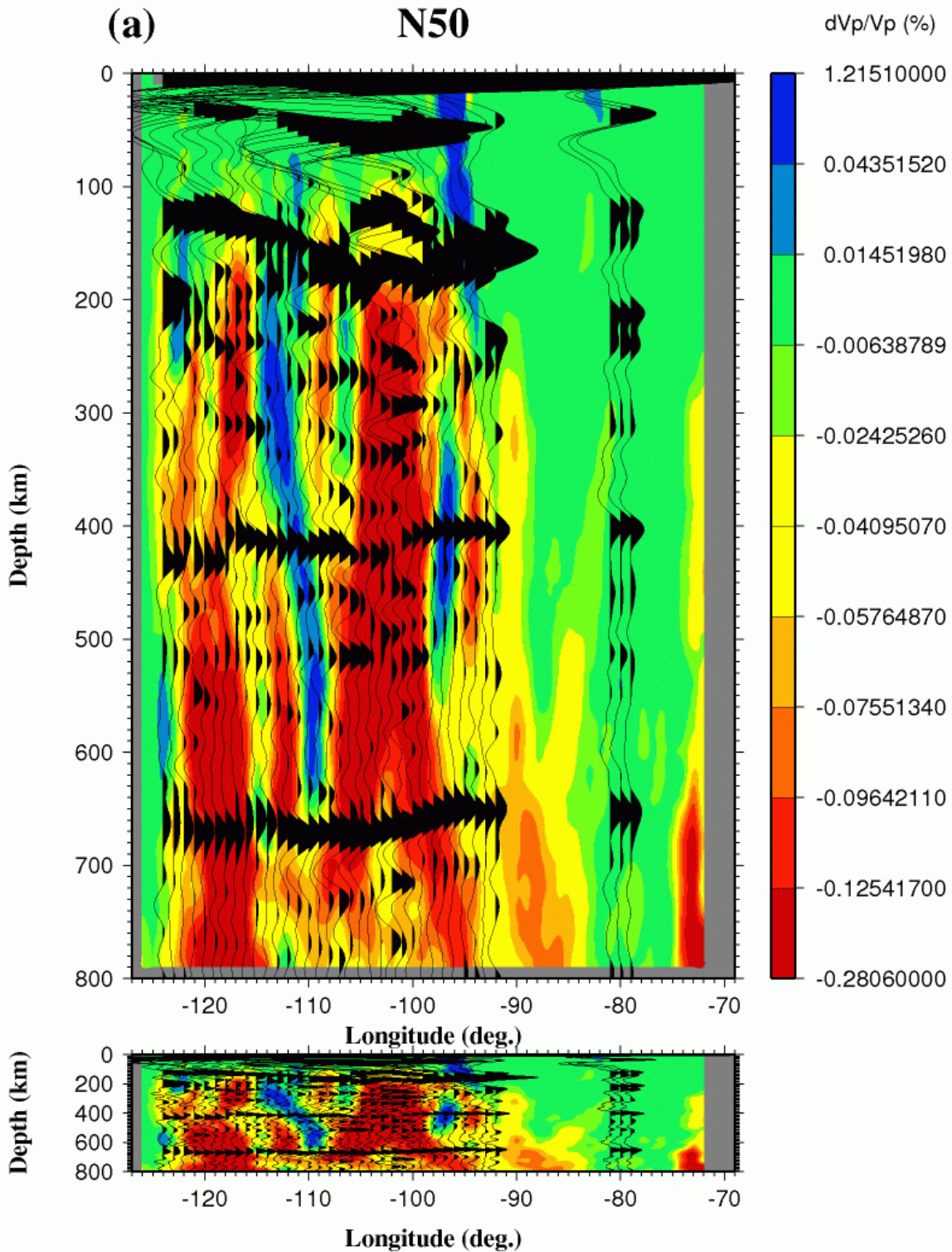
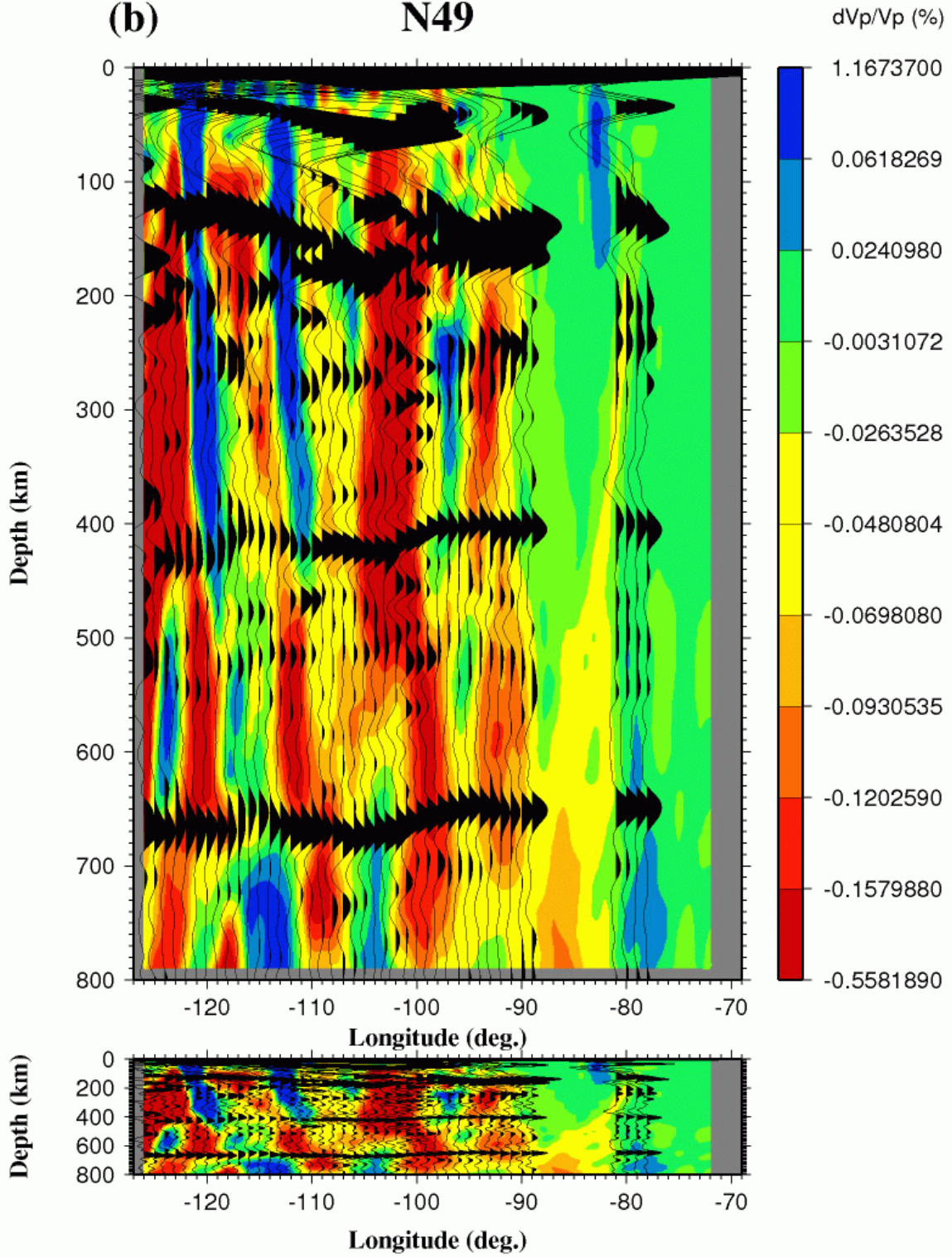


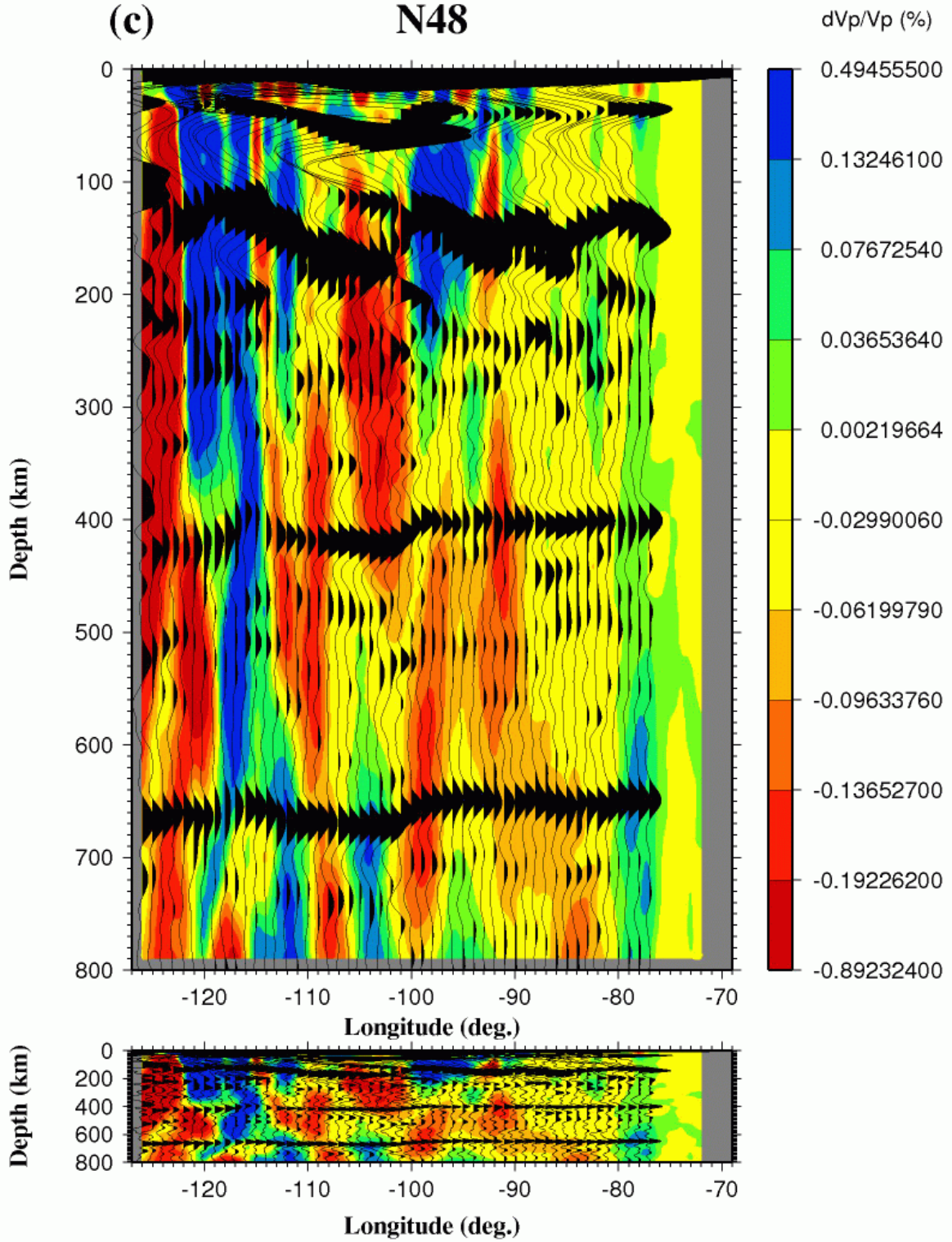
Figure S1. Depth series along each of the 26 latitudinal lines (a-z). The background is the P-wave velocity model along the profiles [Prorritt et al., 2013]. For each figure, the upper panel has a vertical exaggeration of about 10 to emphasize undulations of the discontinuities, and the horizontal and vertical scales in the lower panel are identical. Nonuniform color intervals are used to highlight weak velocity anomalies. The plots are arranged from the north to the south.



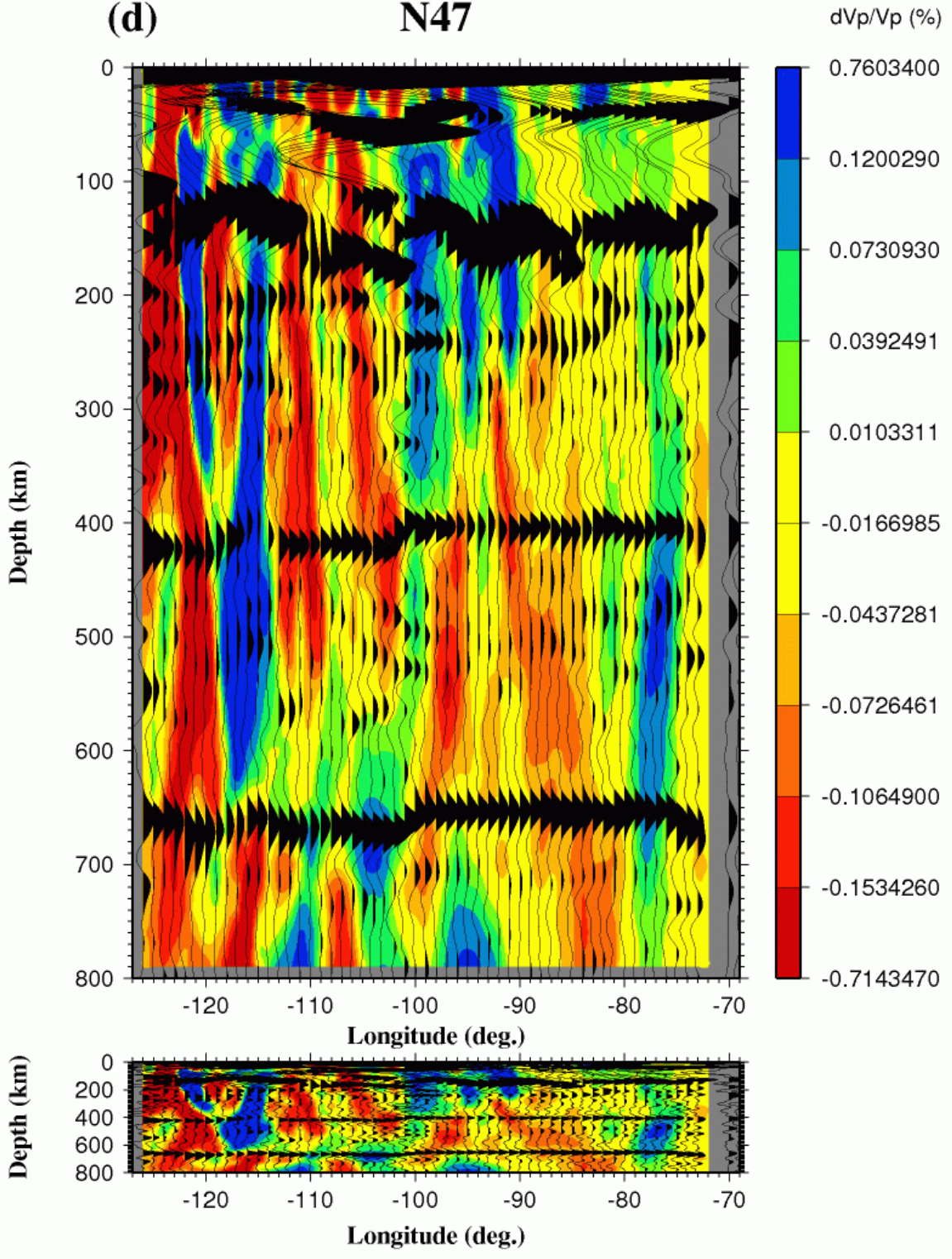
(b) N49



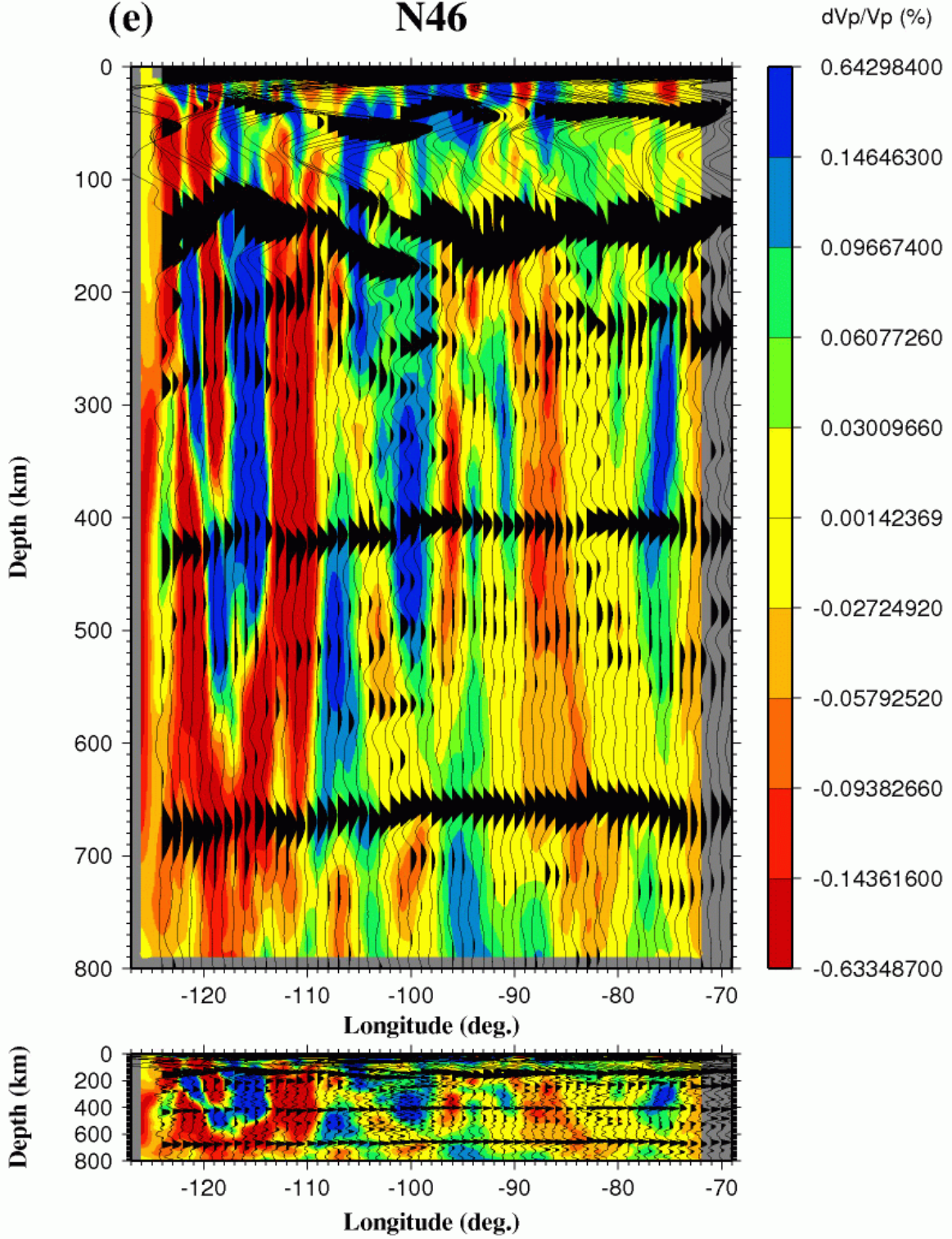
(c) N48



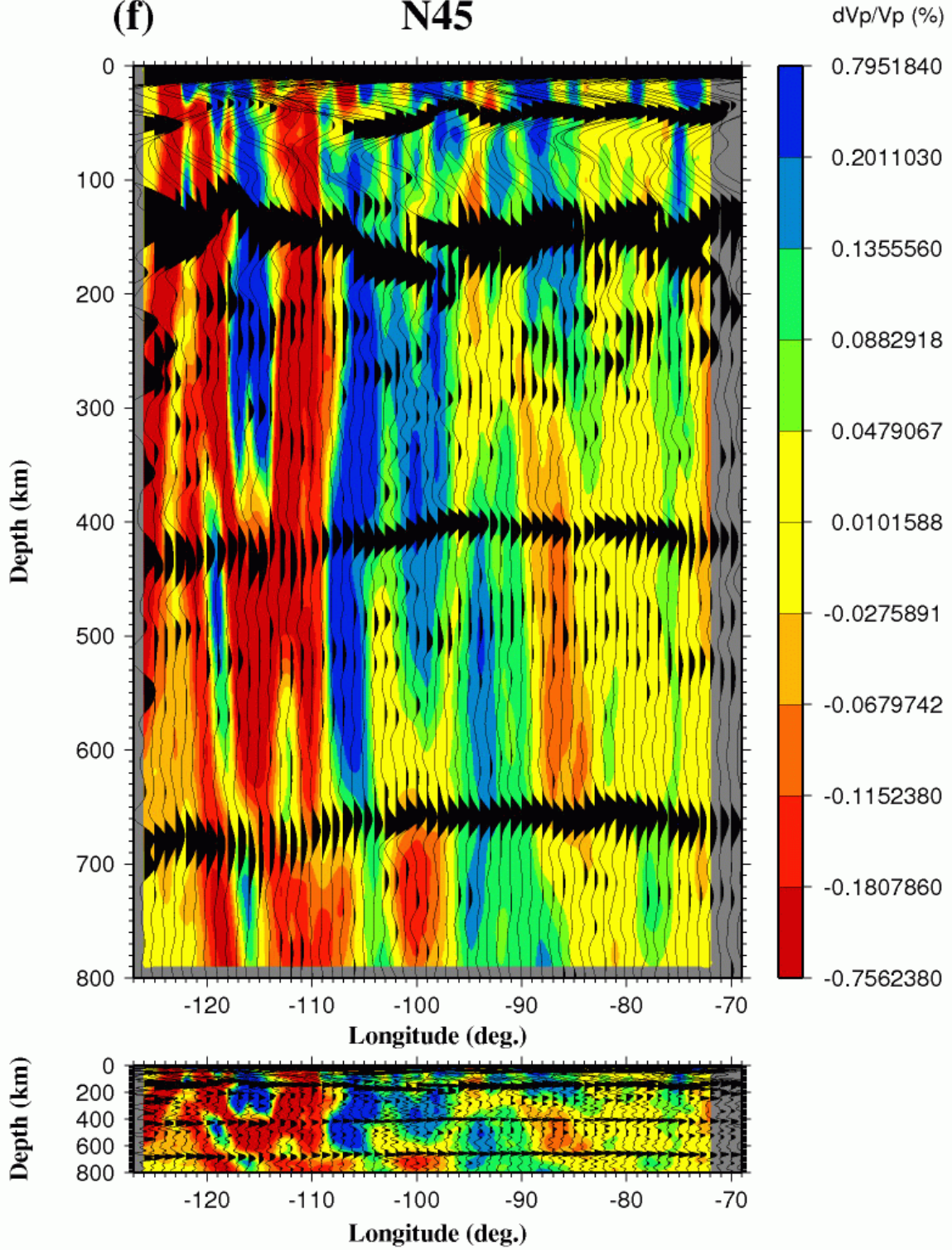
(d) N47



(e) N46

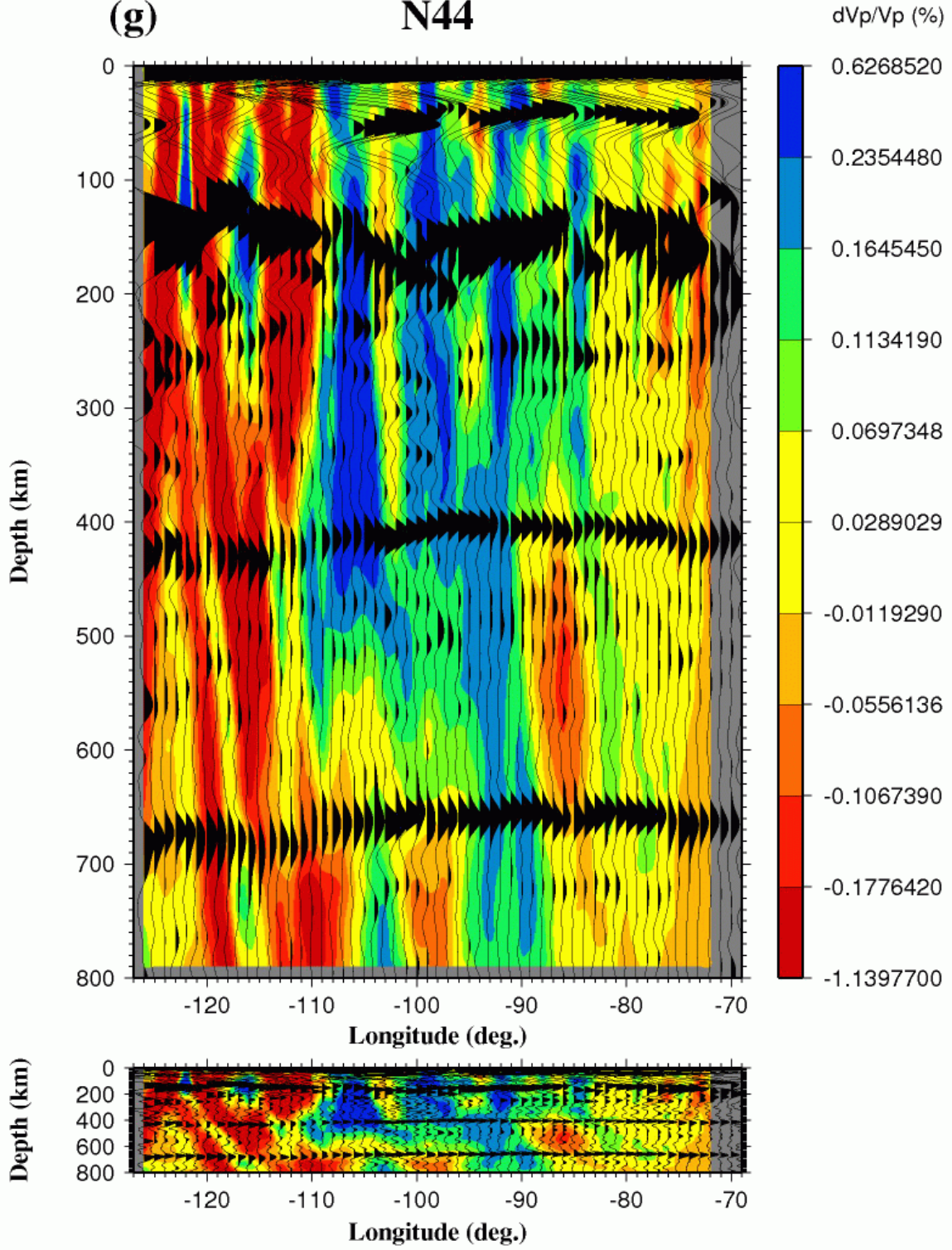


(f) N45

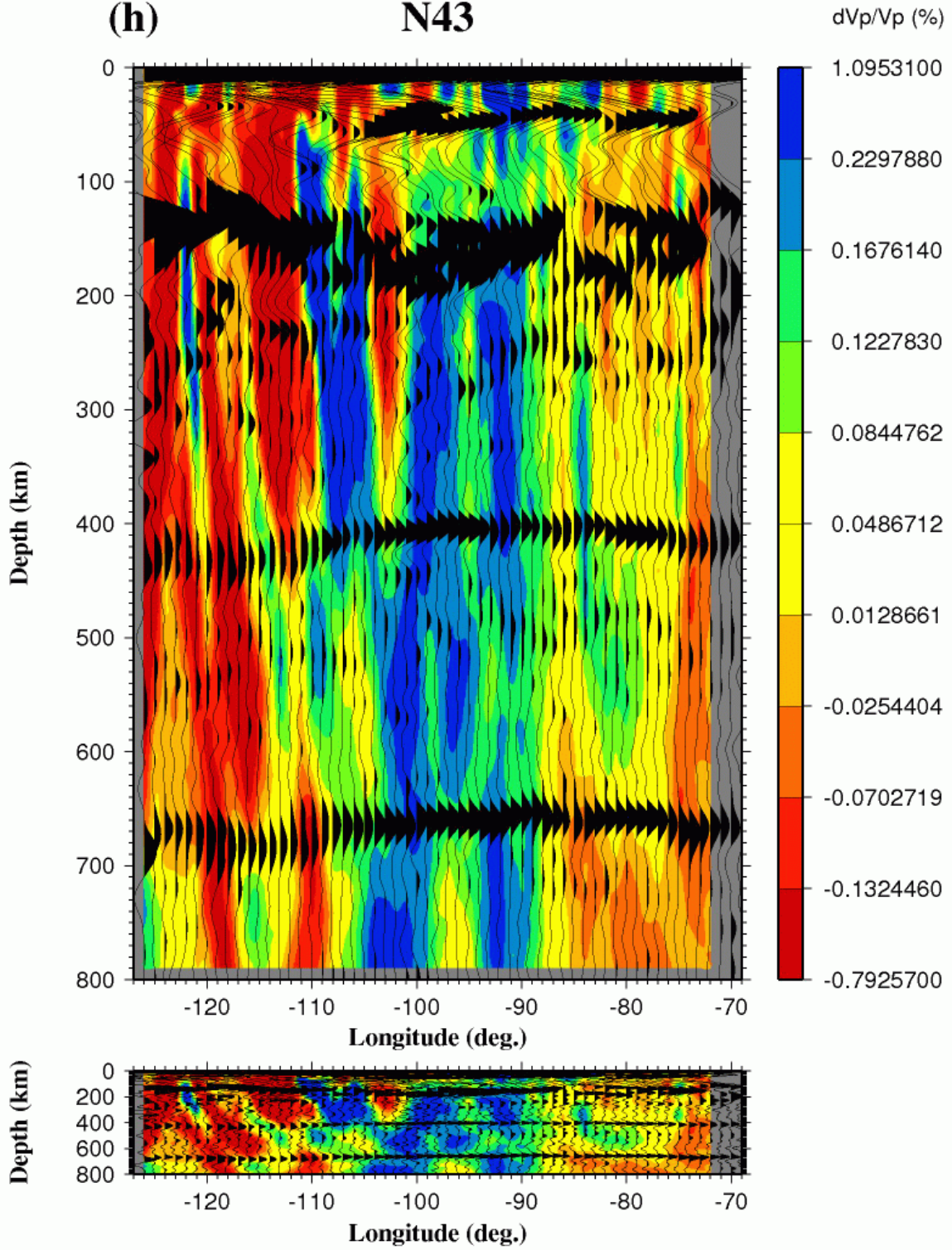


(g)

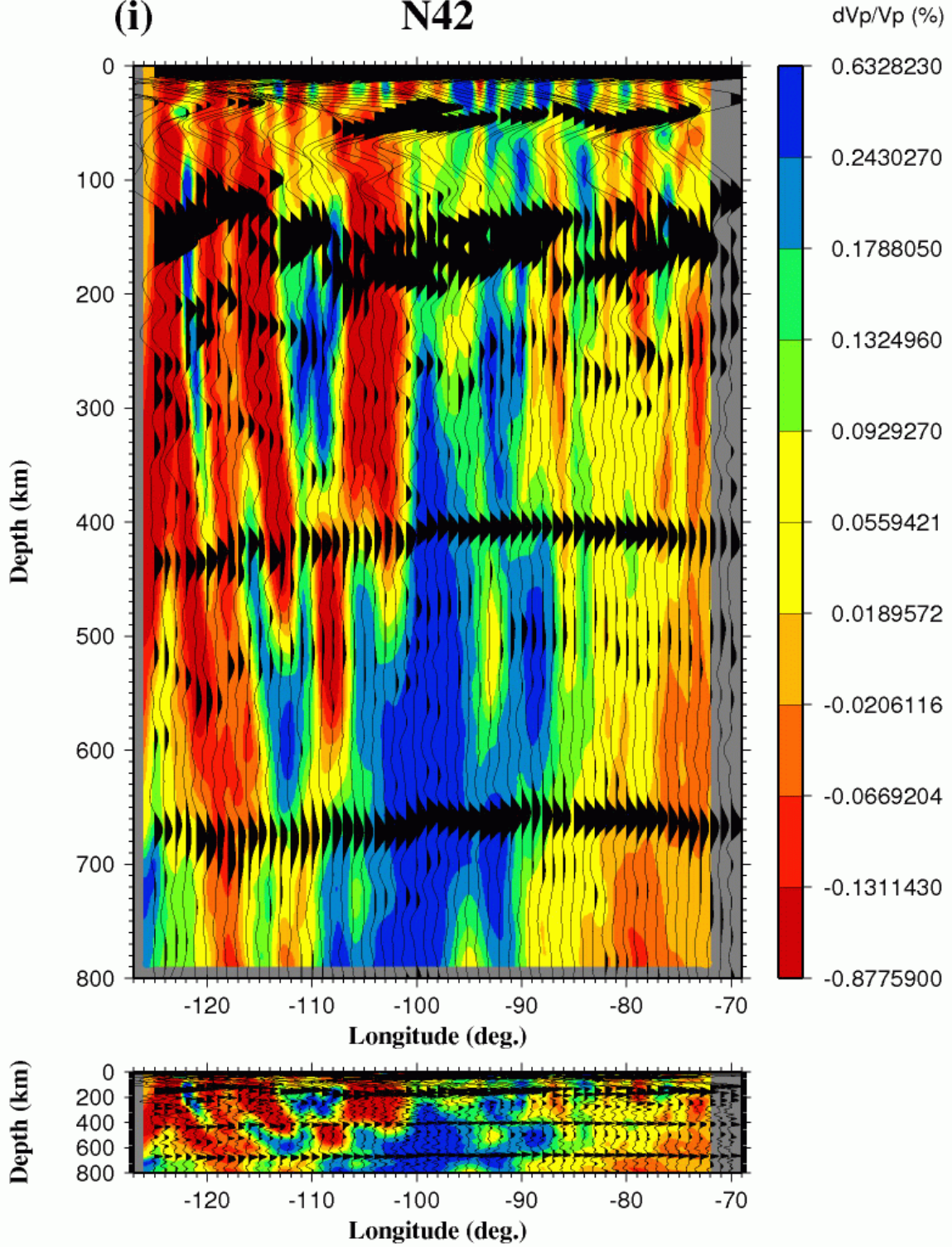
N44



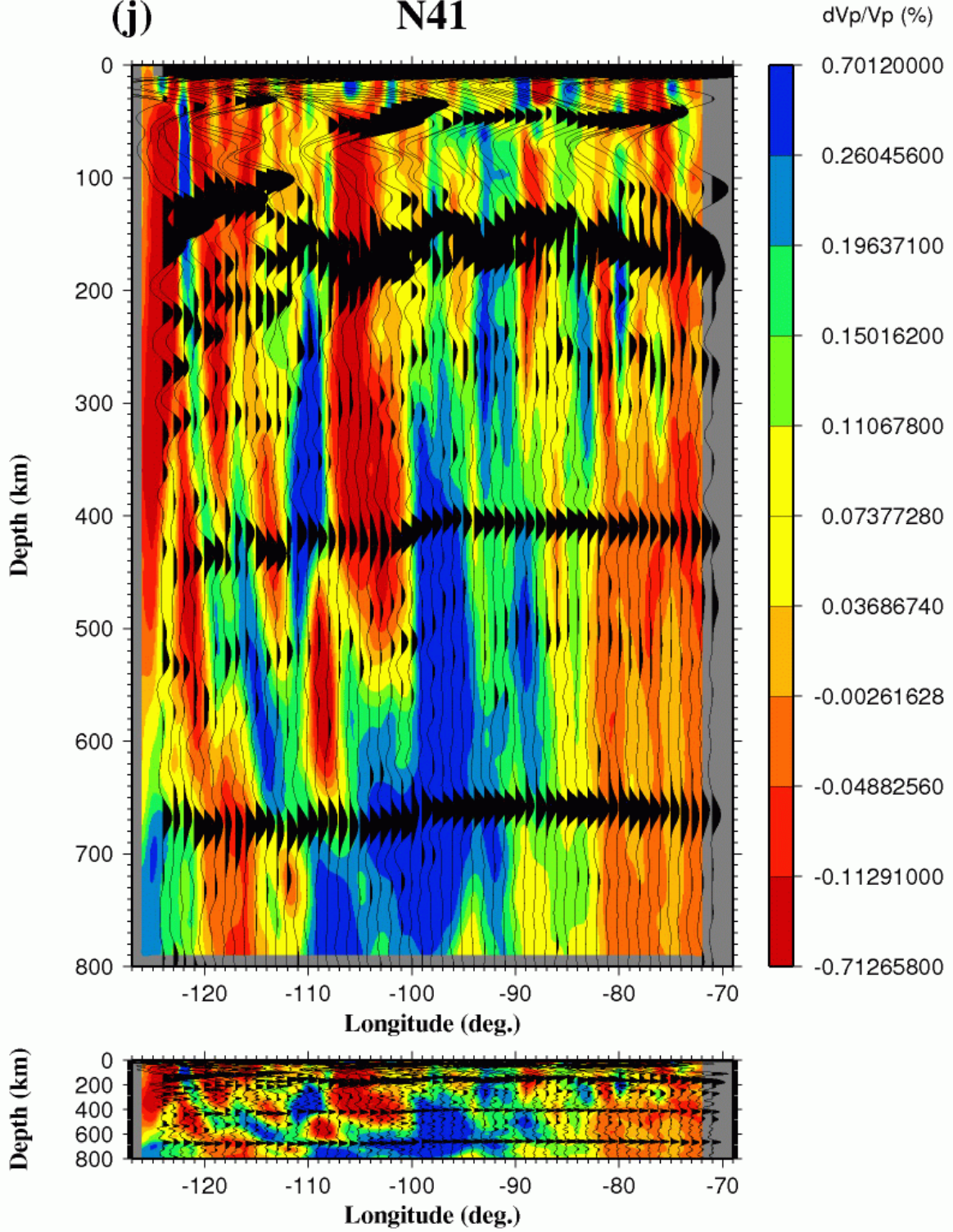
(h) N43



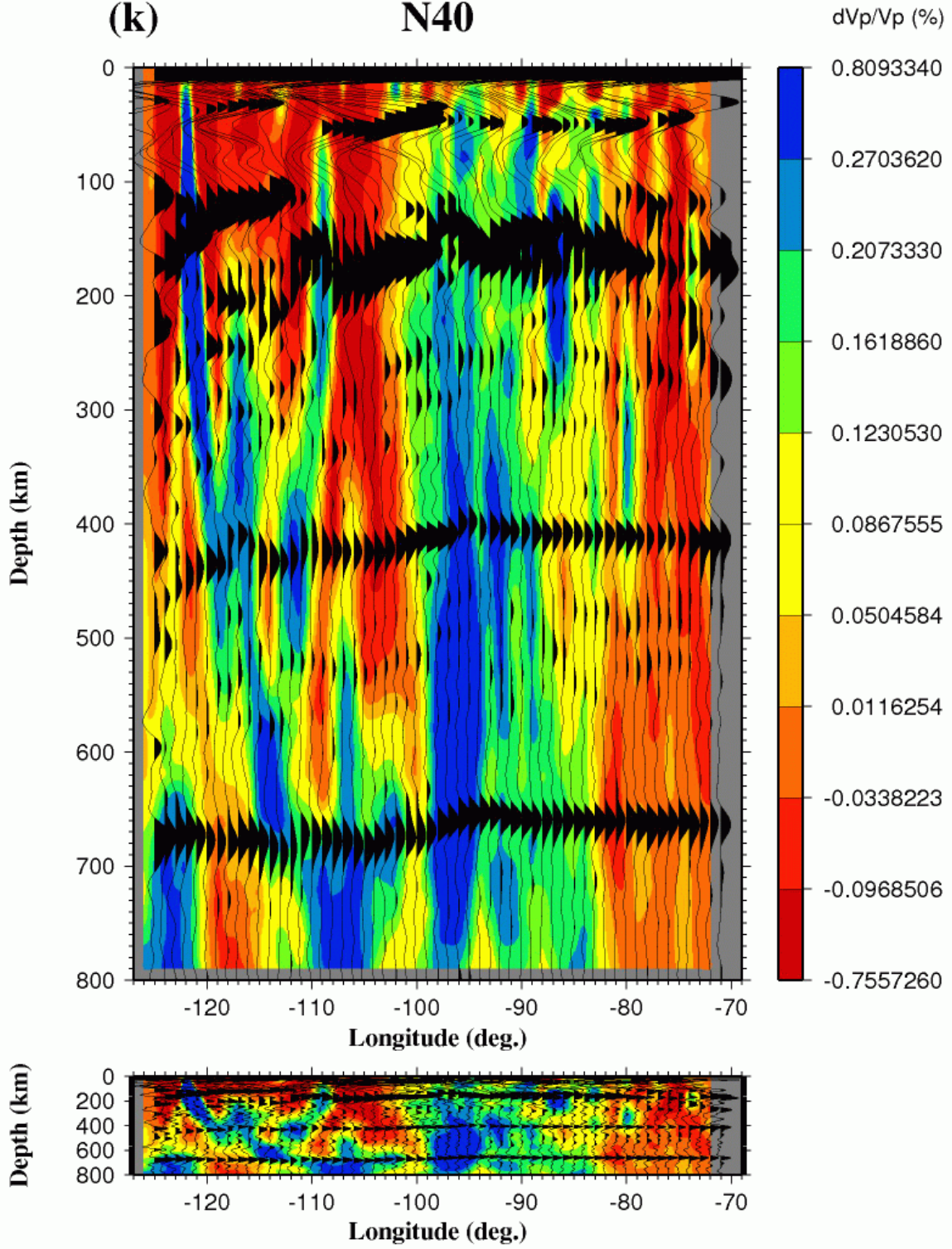
(i) N42



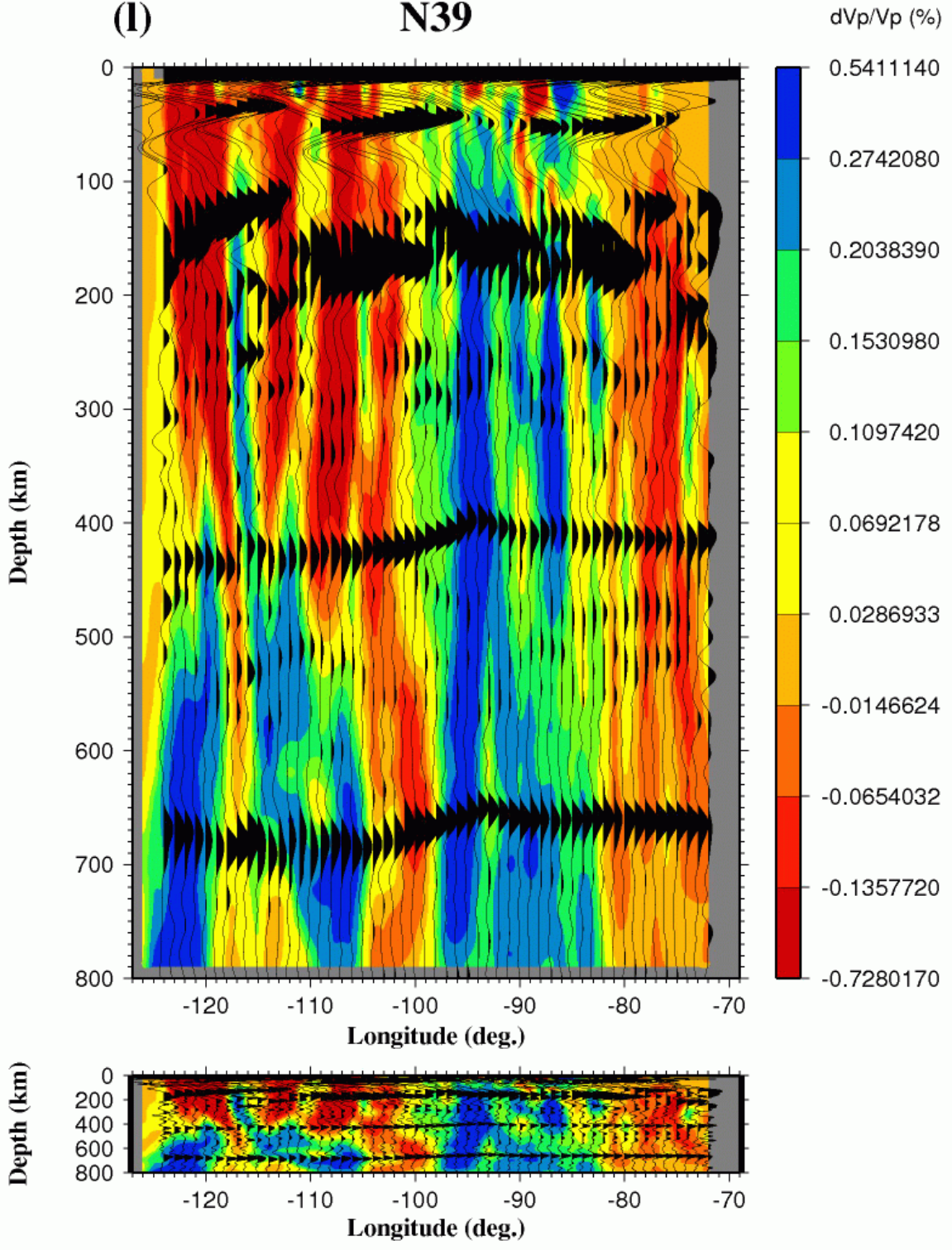
(j) **N41**



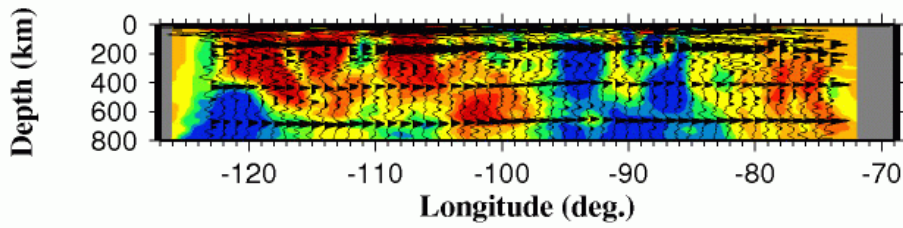
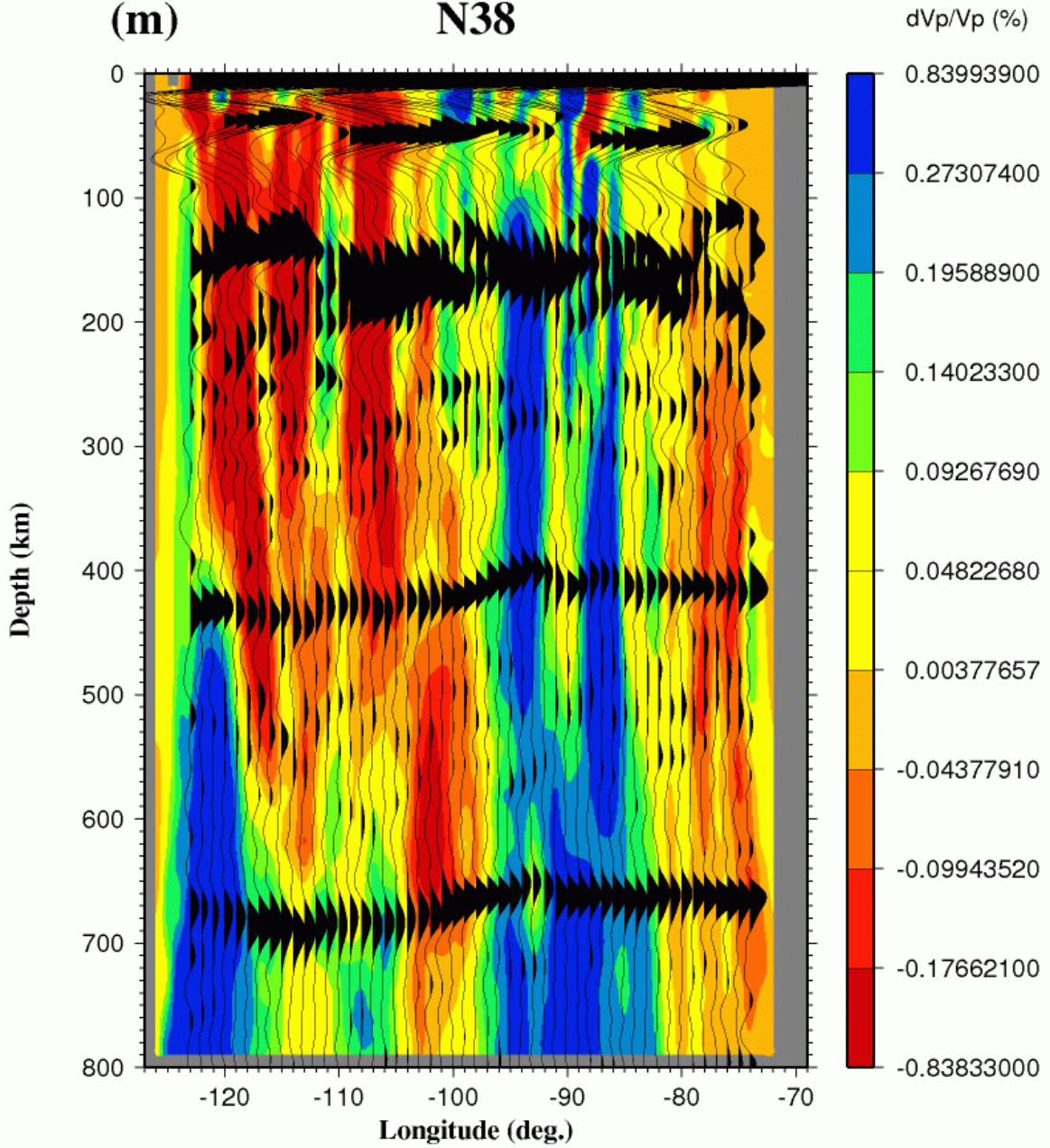
(k) N40



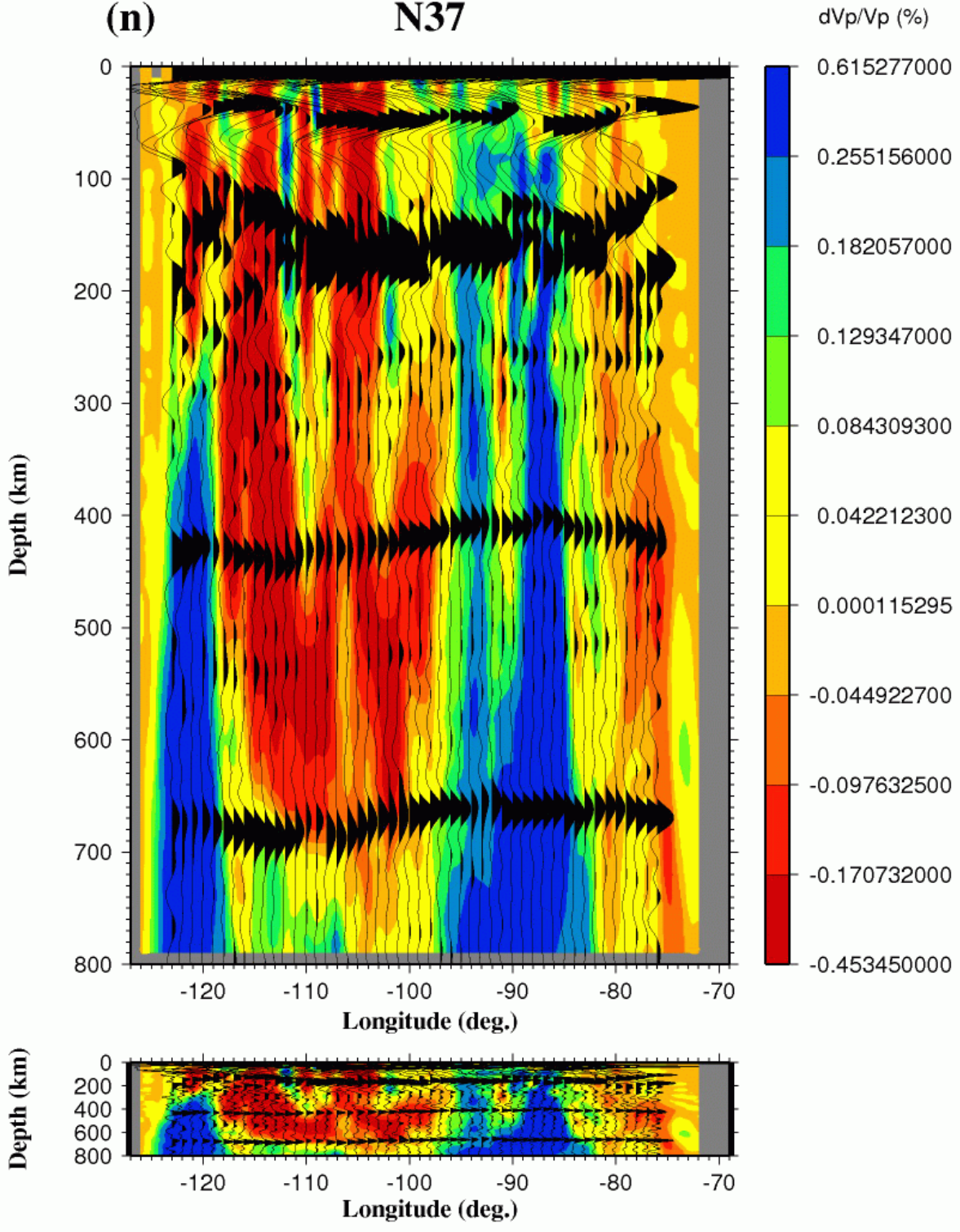
(I) N39



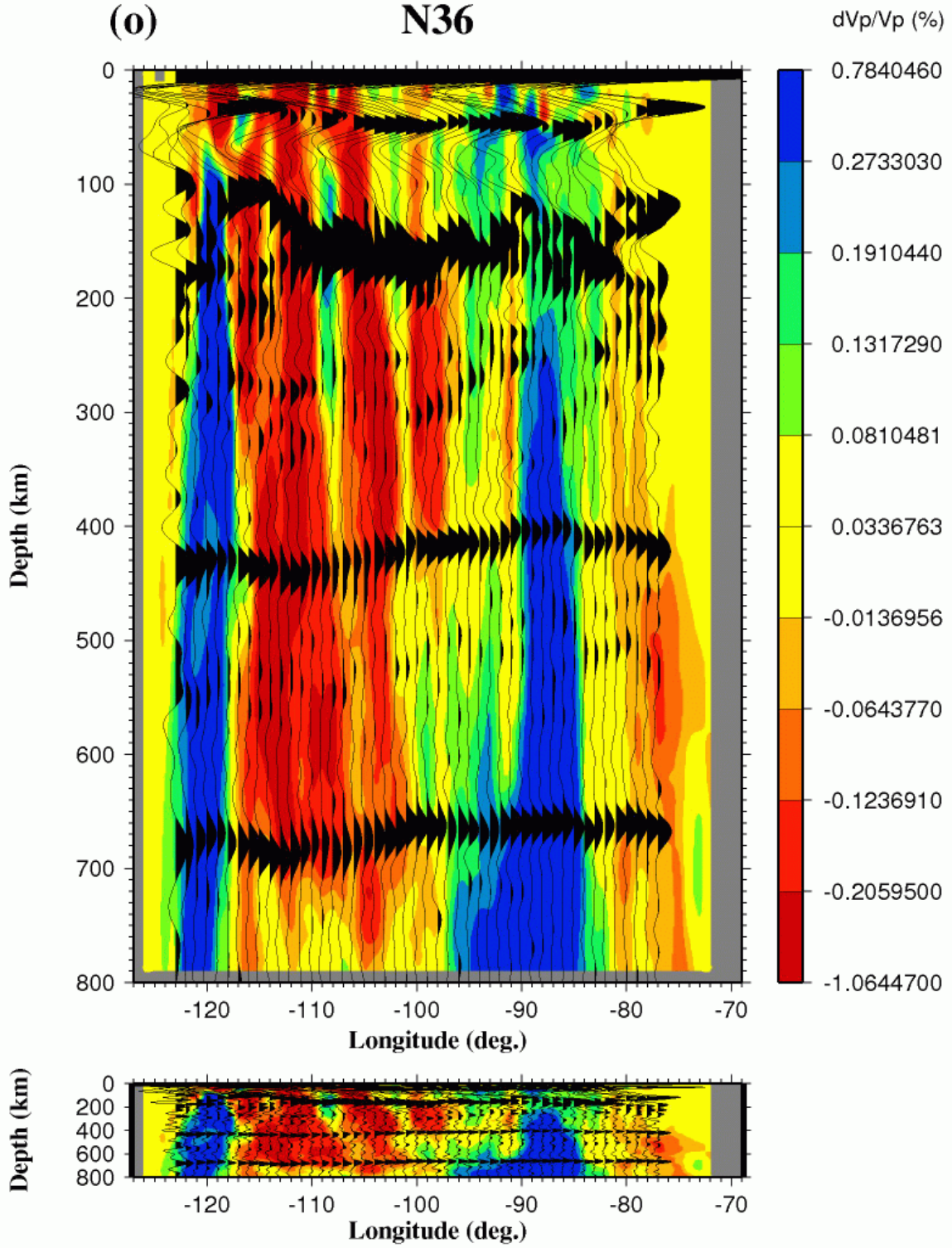
(m) N38



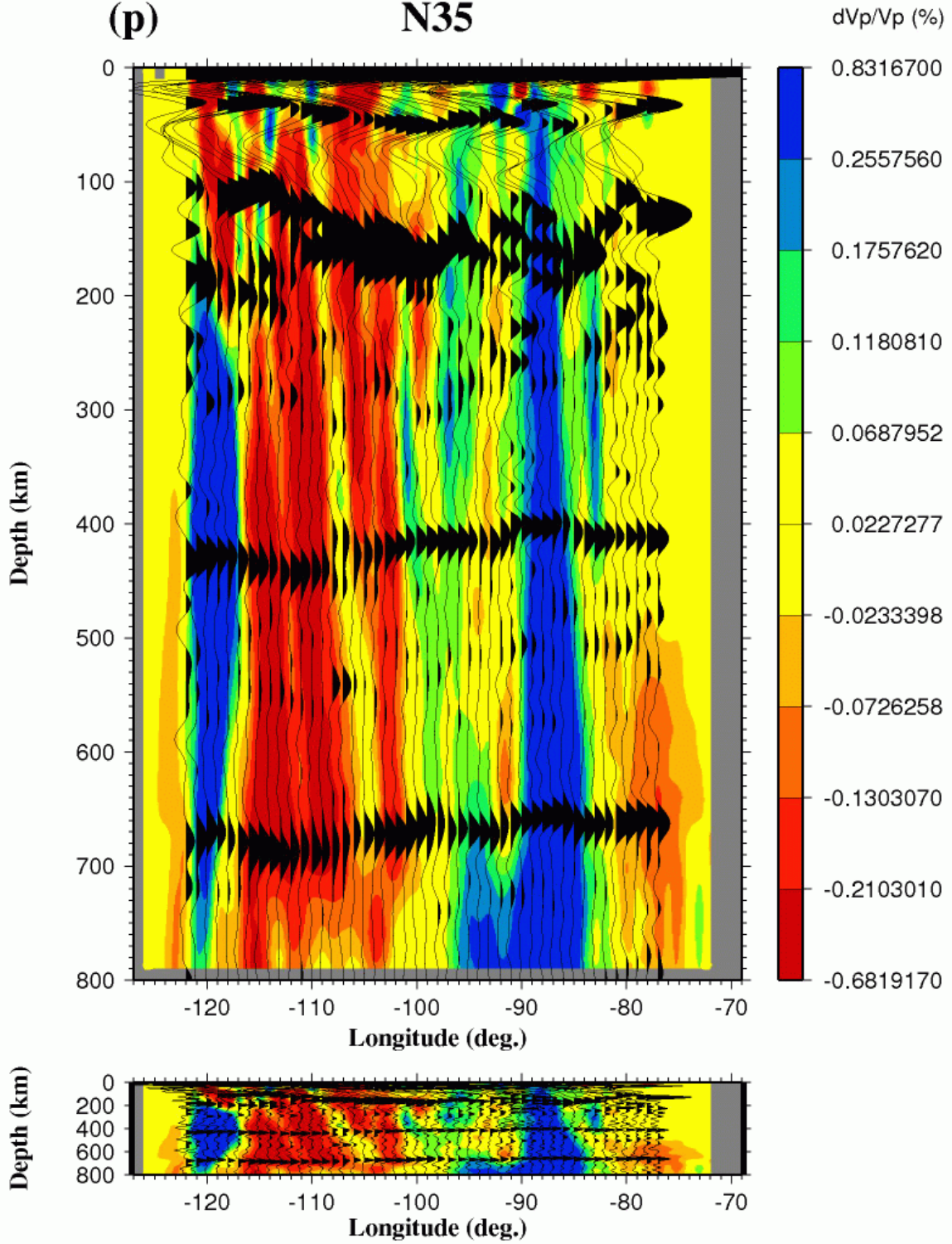
(n) N37



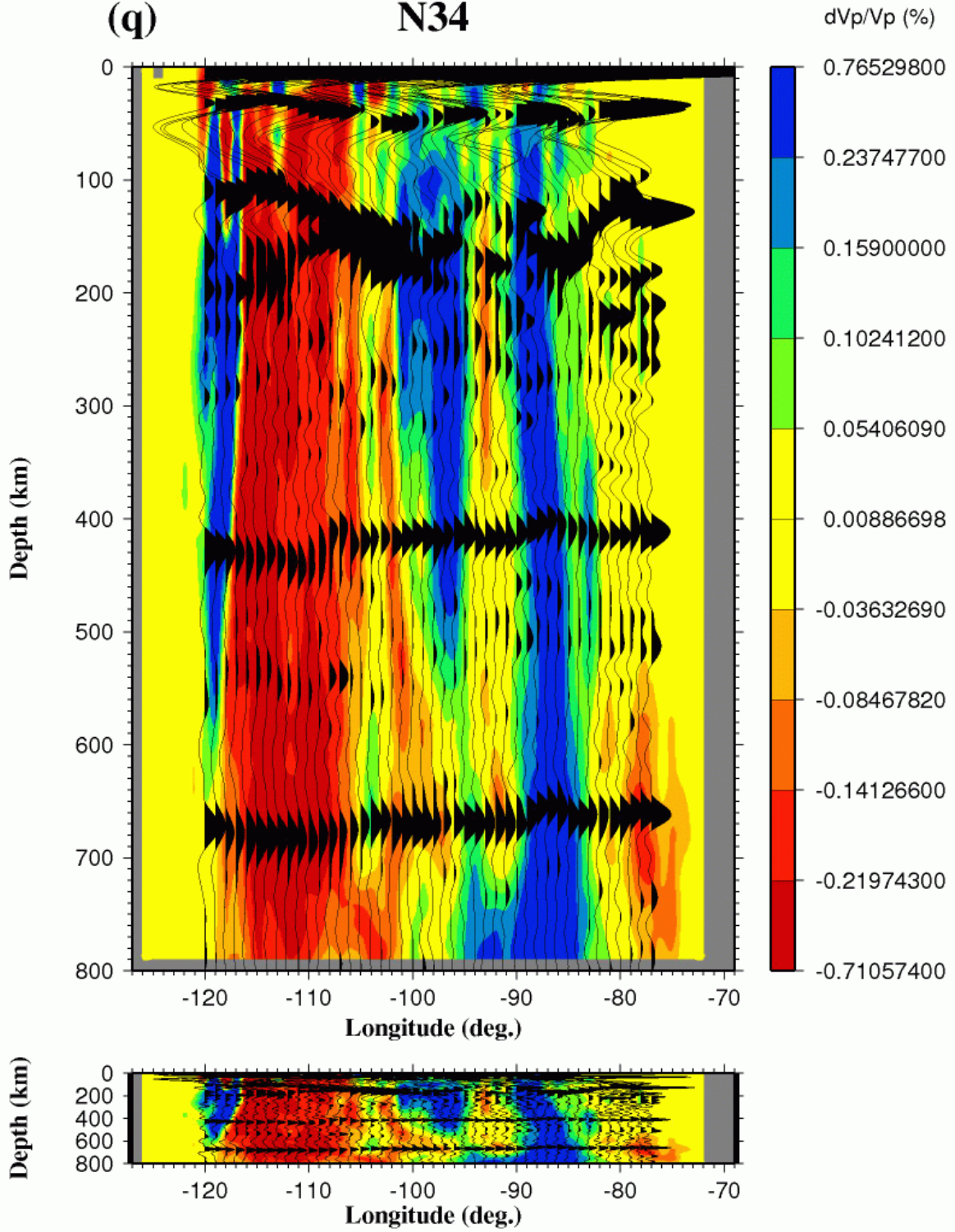
(o) N36



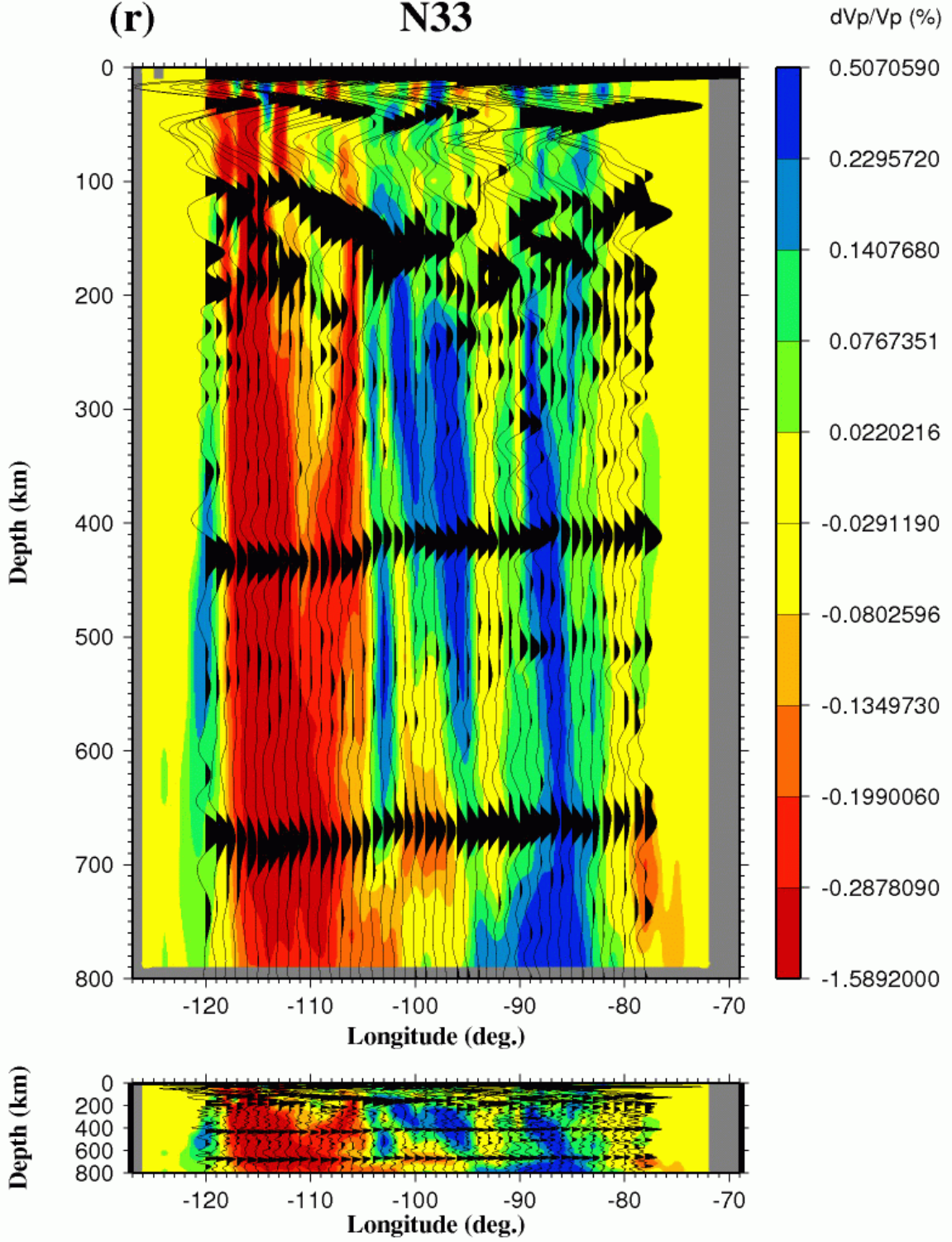
(p) N35



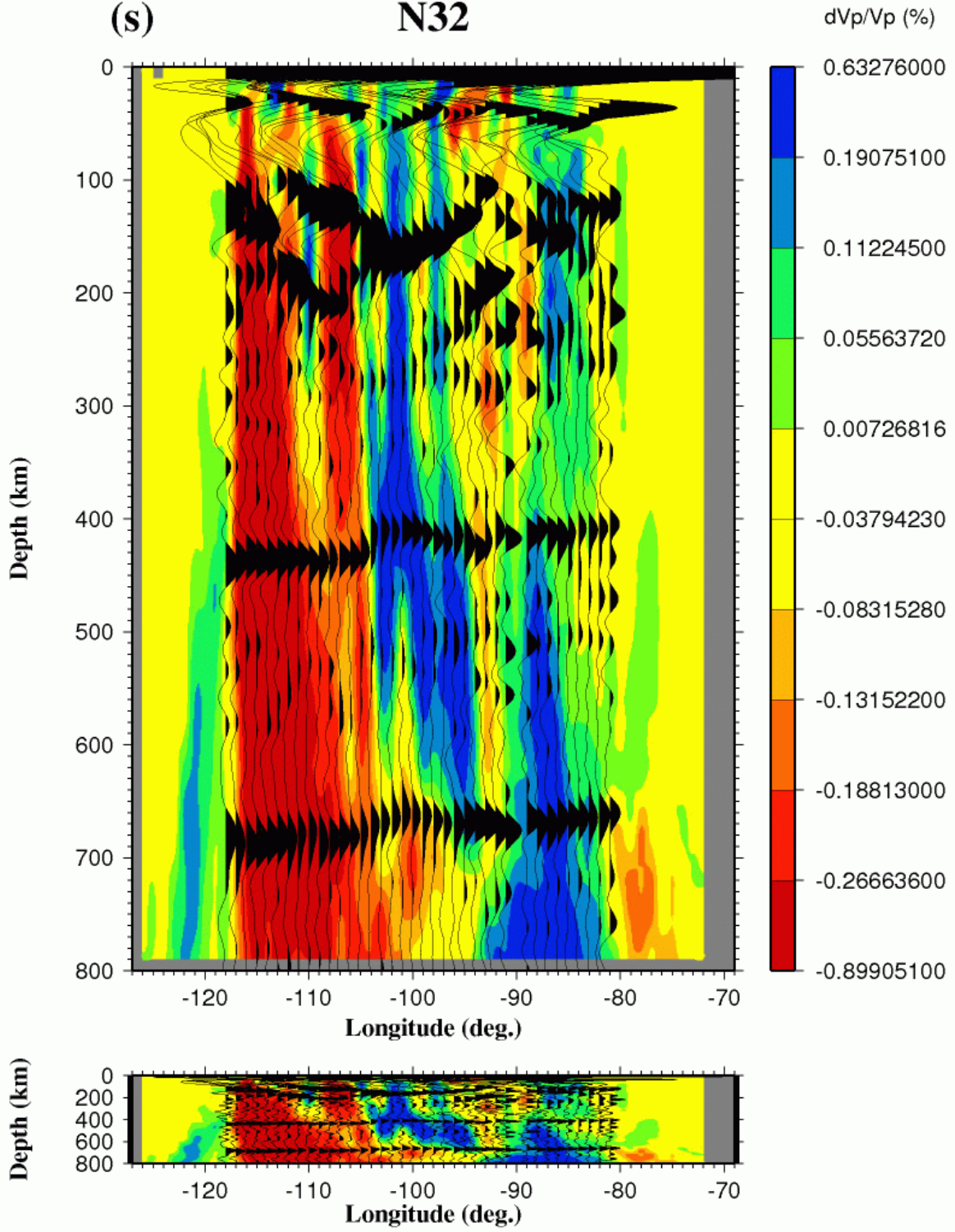
(q) N34



(r) N33



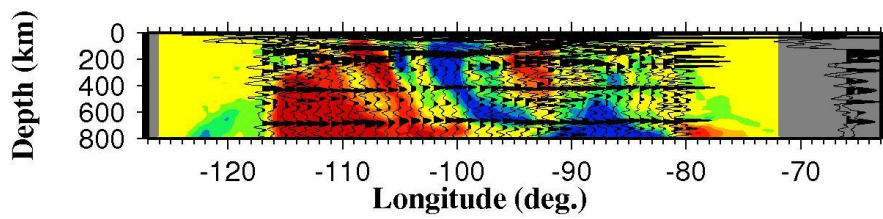
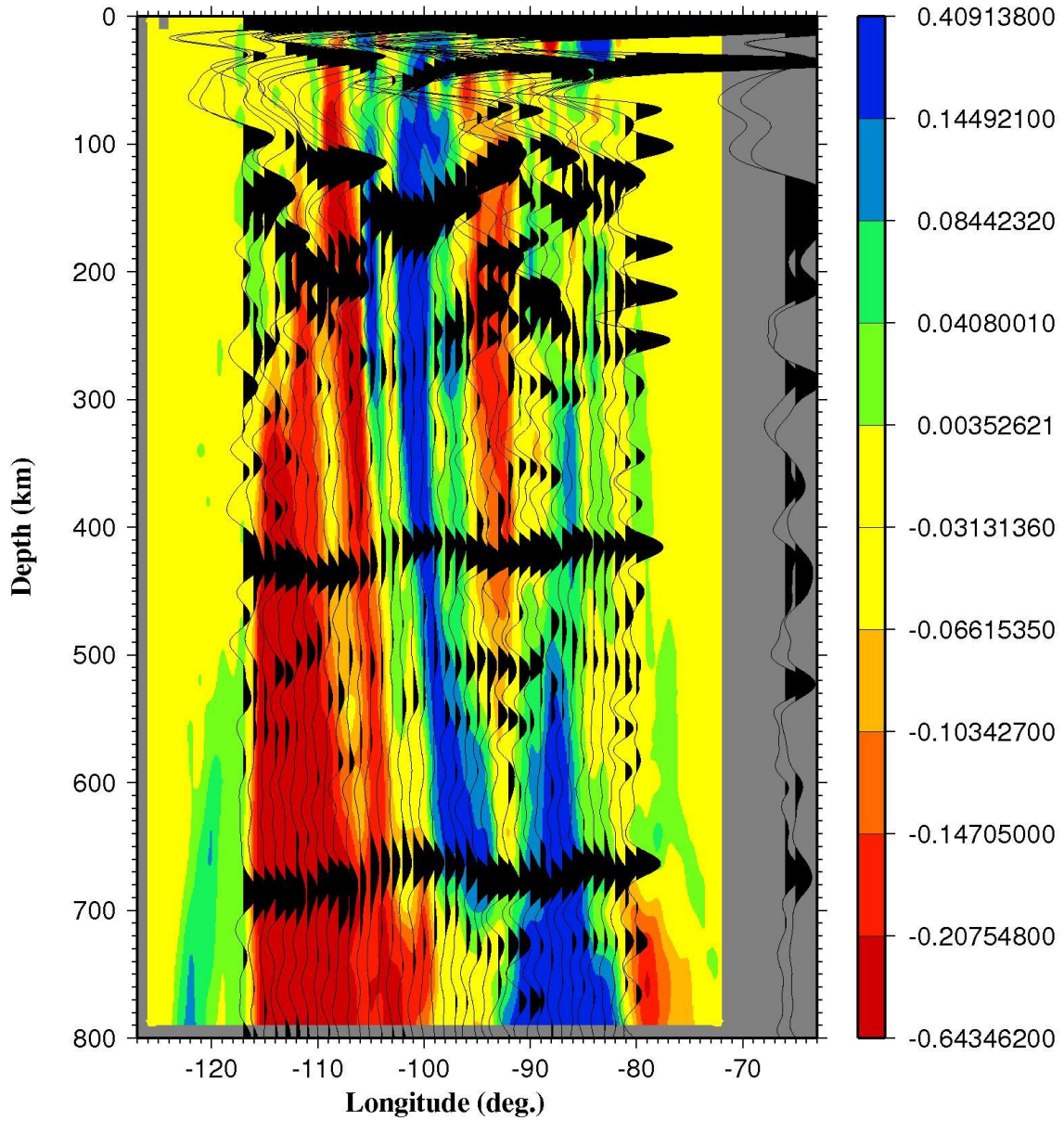
(s) N32

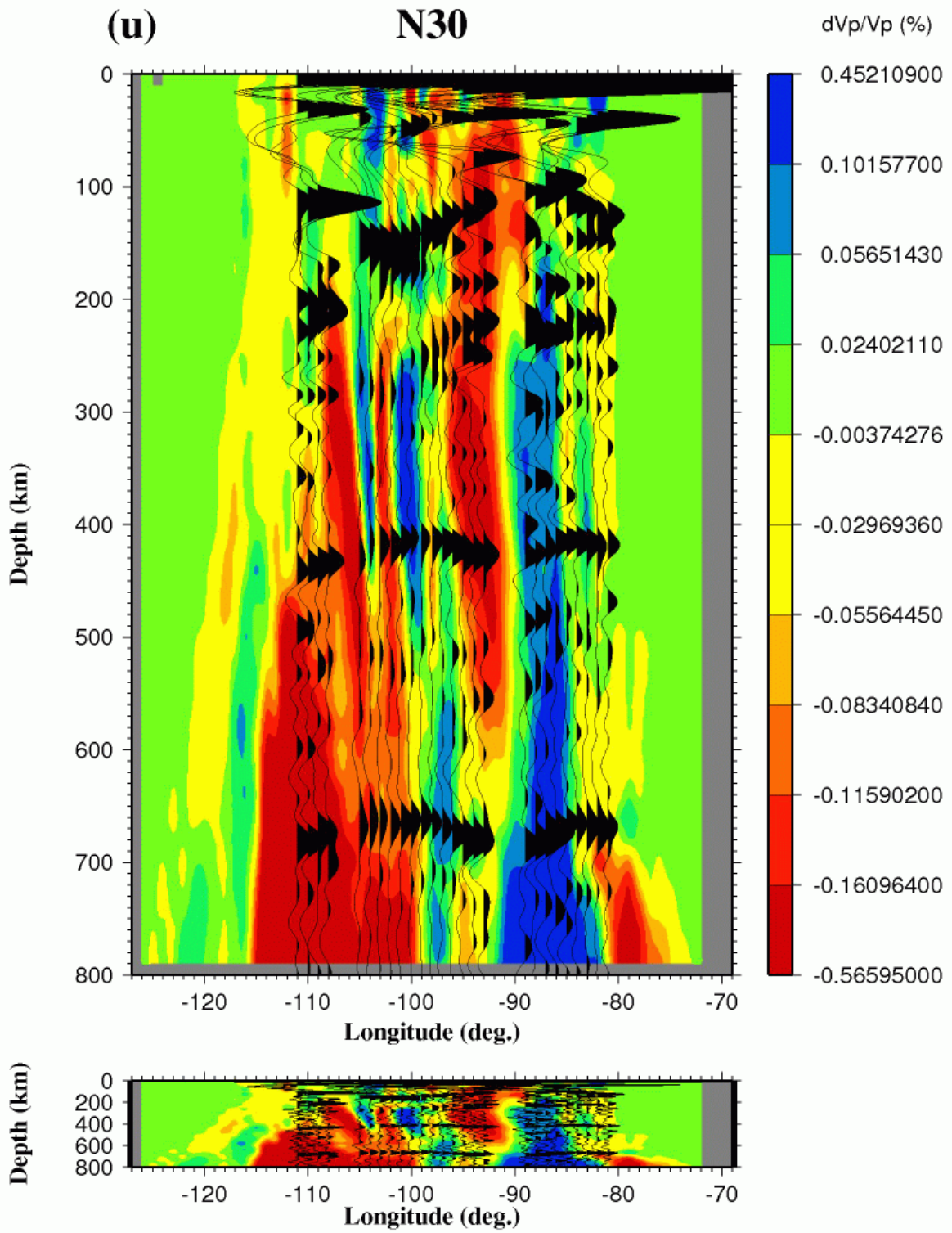


(t)

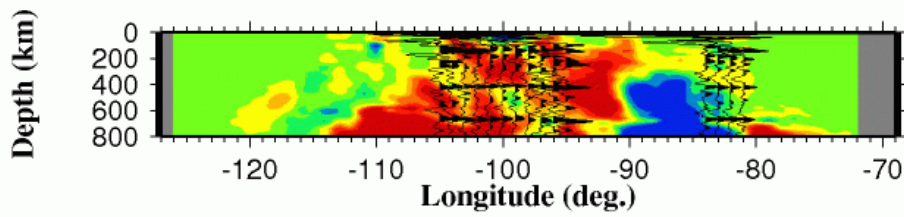
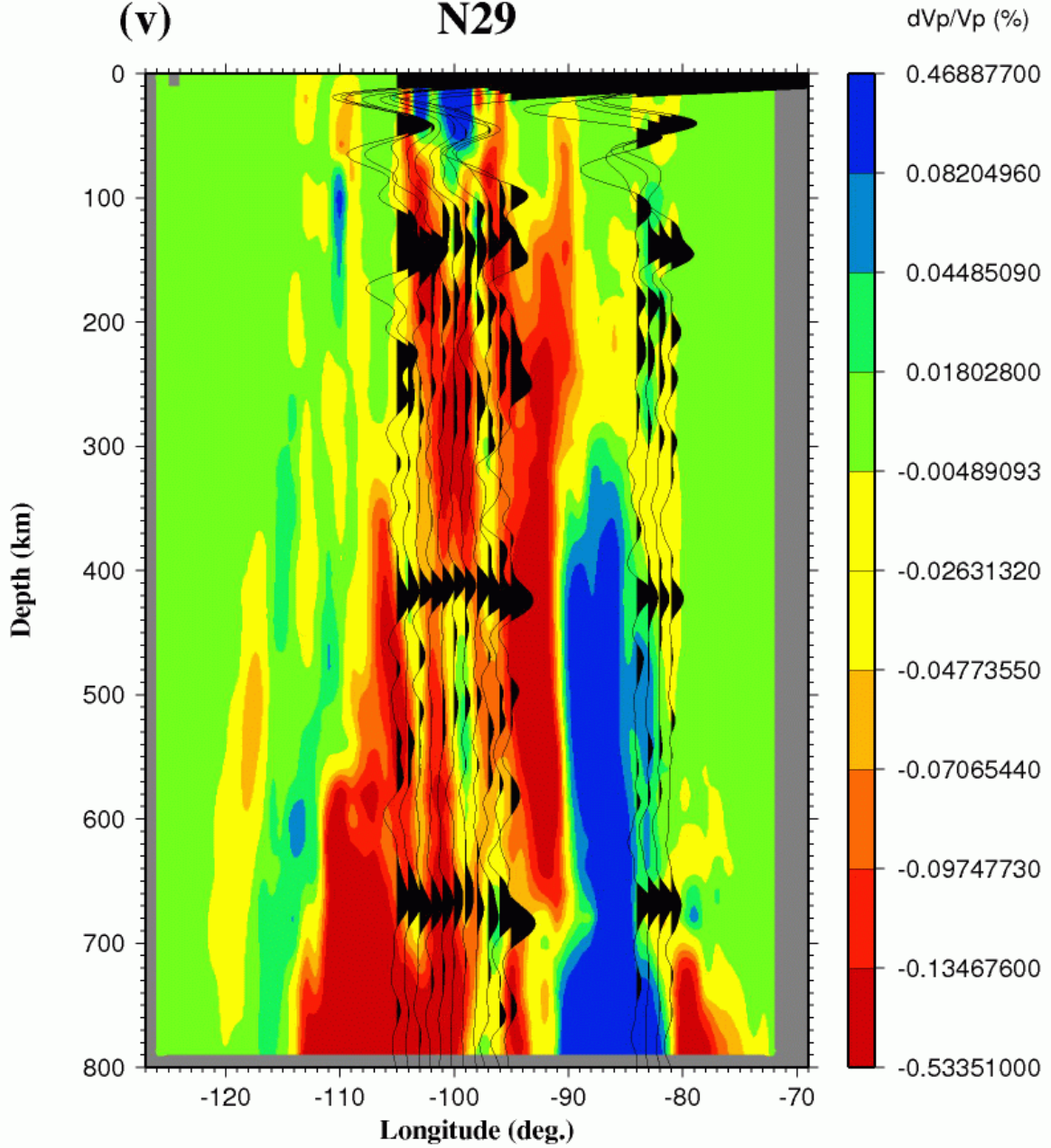
N31

dVp/Vp (%)

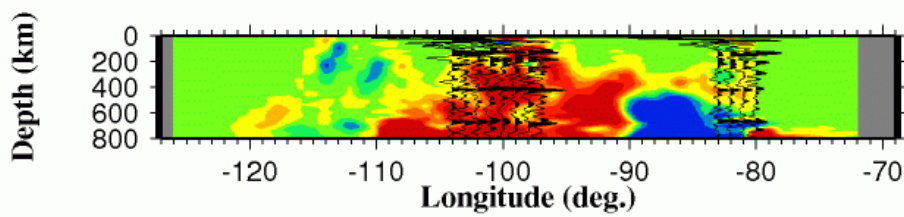
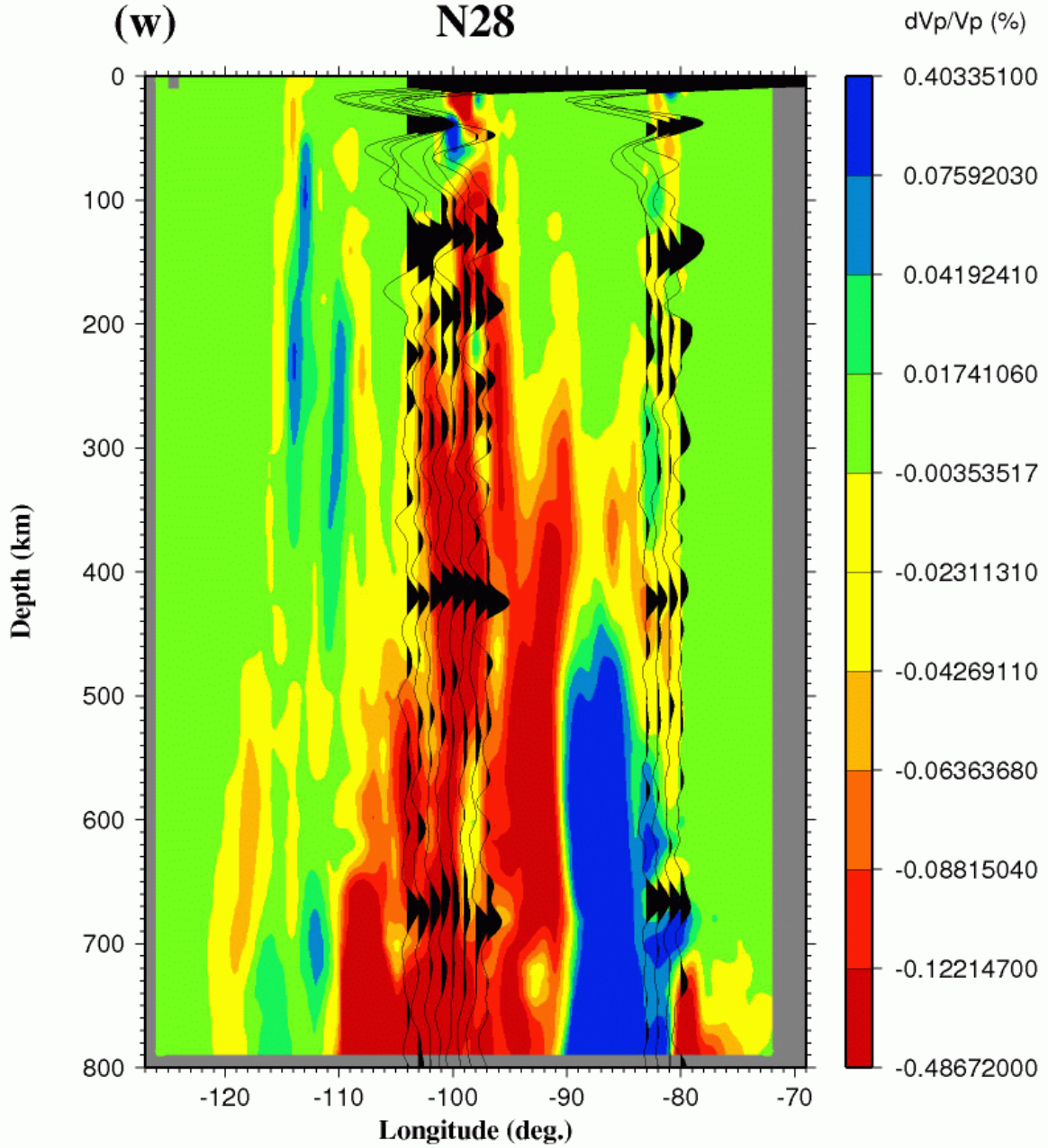




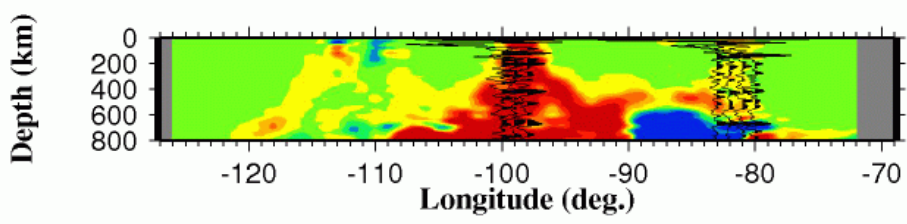
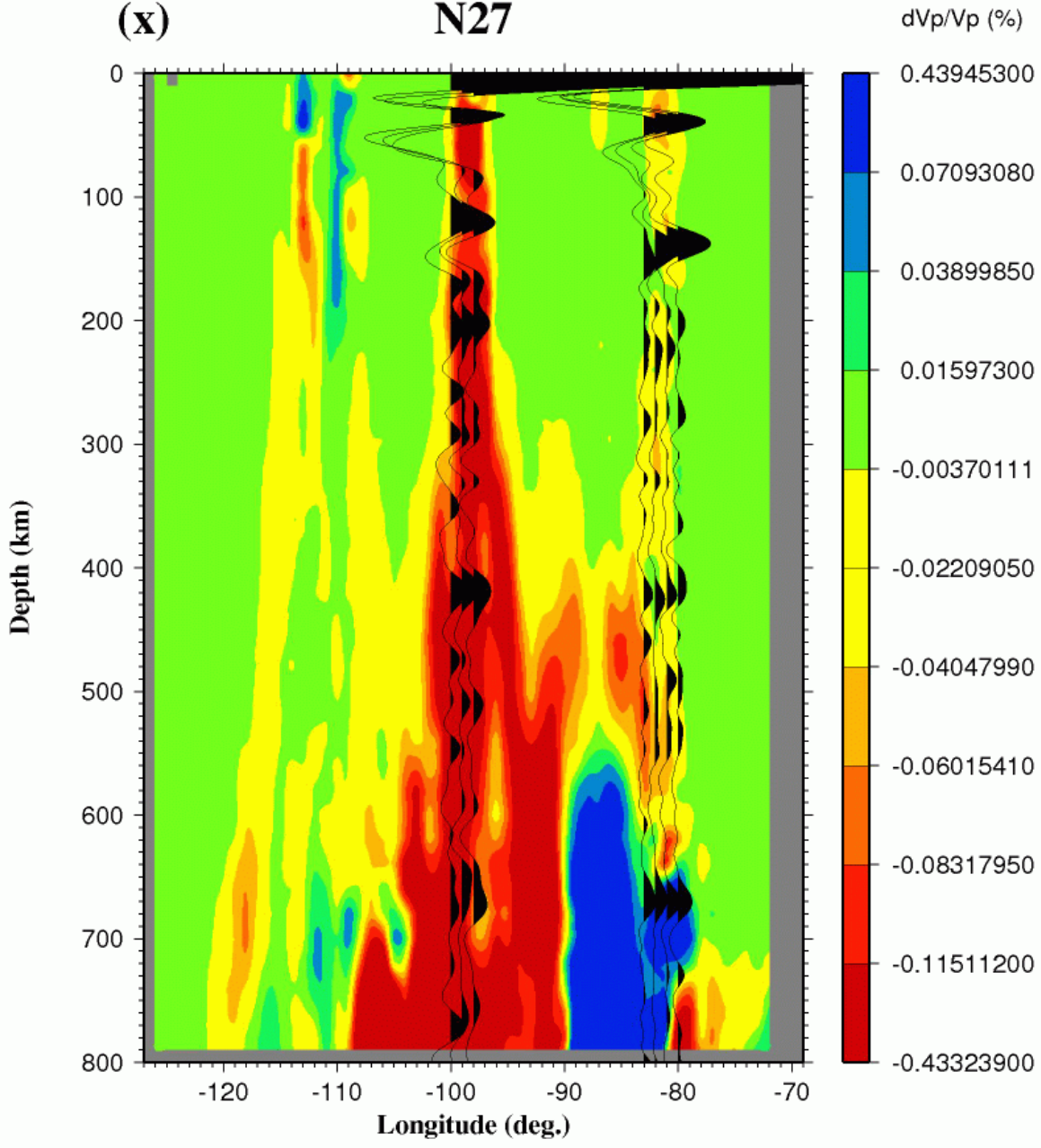
(v) N29



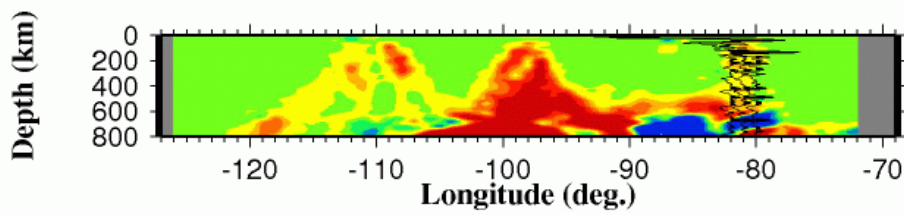
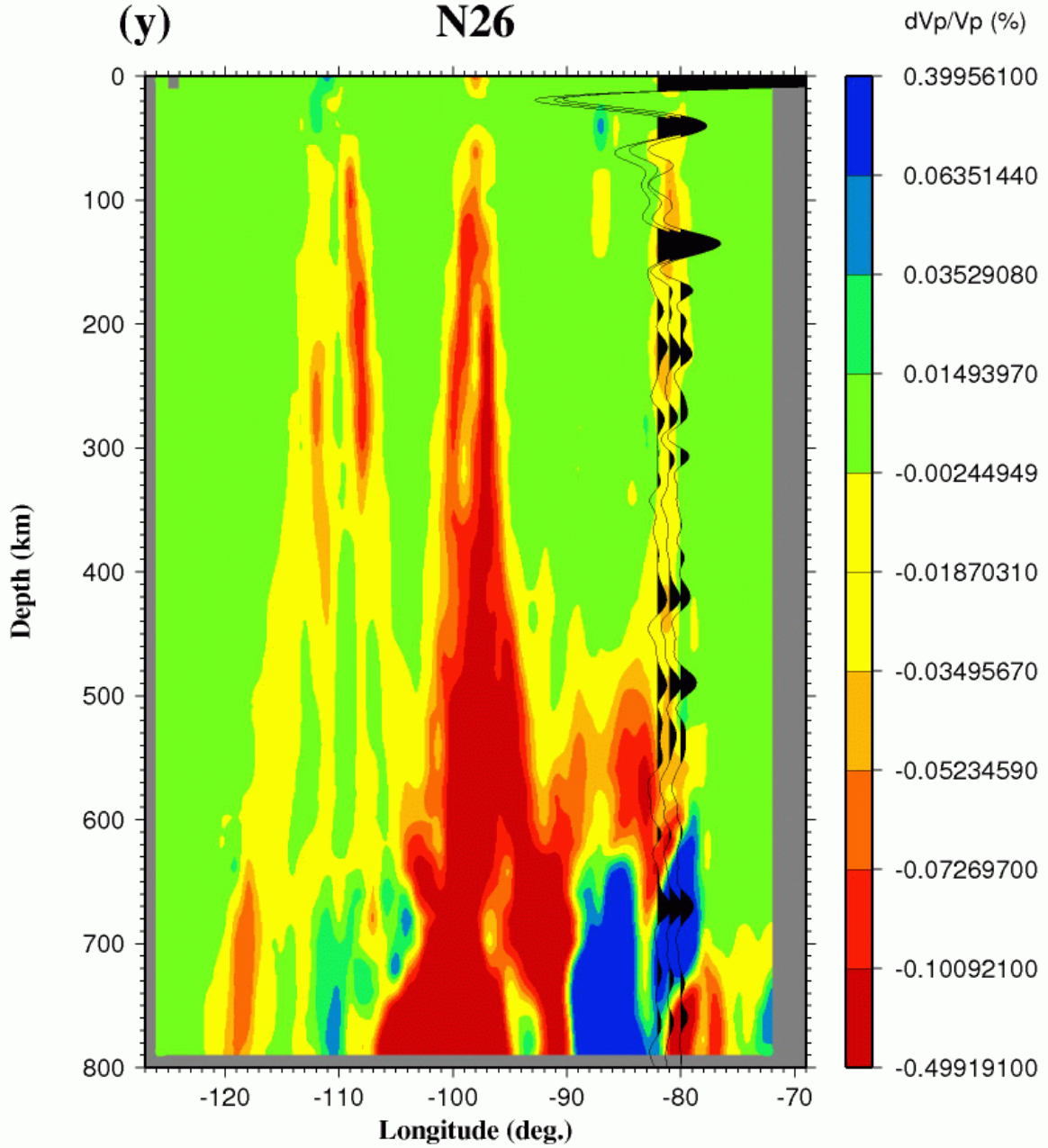
(w) N28



(x) N27



(y) N26



(z) N25

